

NEW SPACES — NEW USES

GROUND LEVEL

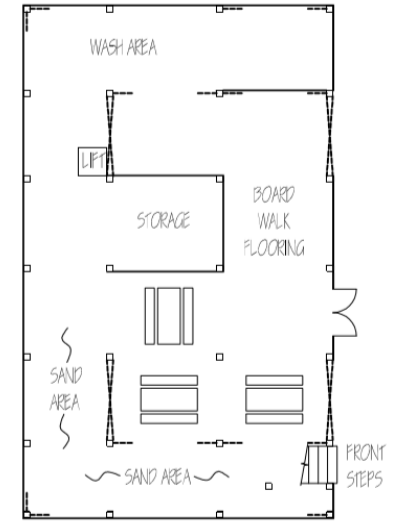
The Clubhouse - We will have current professionals and artisans demonstrating their skills and knowledge: a boat builder fitting planks over the ribs of a boat, a fisherman weaving a shrimp or fish net, a shaper forming a surfboard. A monthly program held here will be **How Did You Do That?** on heritage maritime traditions that are directly linked to local coastal life and history.

Investigation Classroom – This will be a more enclosed area for more traditional classroom work, as well research and hands-on activities. New exhibit panels in the classroom will complement the planned programming by featuring skills and traditions of our local maritime heritage.

Outboard Motor Exhibit – The museum has several vintage outboard motors in storage that will be a very interesting display now that we will have more space.

Wash-off Area and Cubbies – for use during Camp Chris Stone and other outdoor activities during Elementary Explorations and Kids Club programs.

Storage Area – to store equipment and supplies as needed.



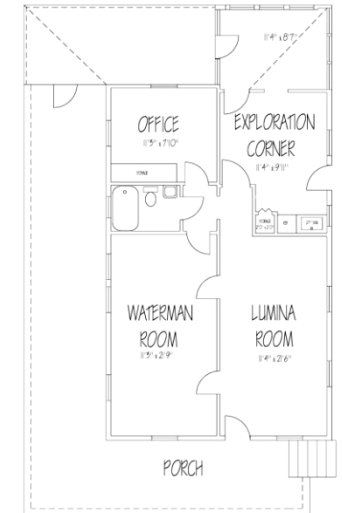
Ground Level

SECOND LEVEL

The Waterman Room with open space that will hold a variety of types of movable exhibit panels and can also be used for showing movies and hold talks.

The Lumina Room will have our outstanding new Lumina exhibit and the museum's current centerpiece model of the beach. Here we will have rotating exhibits that link our past to our present.

Exploration Corner for more hands-on activities.



Second Level

CAPITAL CAMPAIGN COSTS

PHASE I - \$140,000 COMPLETED - TO MOVE, SECURE, AND STABILIZE THE BUILDING

PHASE II - \$120,000- IN PROGRESS — UPFIT ALL SYSTEMS AND BEGIN PROGRAMS

PHASE III - \$130,000 — LATE DECEMBER — COMPLETE EXHIBITS, INSTALL LIFT, AND COMPLETE FURNISHING