

This is an exciting time in the life of the museum. Our expansion is underway as we work to secure our future. Your support at this time is so important.

CAPITAL CAMPAIGN COSTS

PHASE I - \$140,000 - **COMPLETED**

PHASE II - \$80,000 - **IN PROGRESS**

PHASE III - \$130,000 - **FALL 2019/WINTER 2020**

NEW SPACES — NEW USES

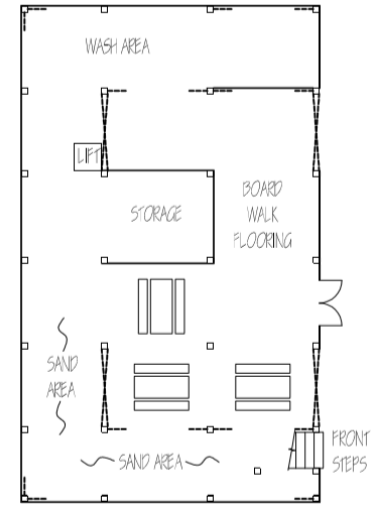
GROUND LEVEL

THE CLUBHOUSE - We will have professionals and artisans demonstrating their skills and knowledge: a boat builder fitting planks over the ribs of a boat, a fisherman weaving a shrimp or fish net, a shaper forming a surfboard. A monthly program held here will be **How Did You Do That?** on heritage maritime traditions that are directly linked to local coastal life and history.

INVESTIGATION CLASSROOM - This will be a more enclosed area for more traditional classroom work and hands-on activities. New exhibit panels in the classroom will complement the planned programming by featuring skills and traditions of our local maritime heritage.

OUTBOARD MOTOR EXHIBIT - The museum has several vintage outboard motors in storage that would make a very interesting display now that we will have more space.

WASH-OFF AREA AND CUBBIES - for use during Camp Chris Stone and other outdoor activities during Elementary Explorations and Kids Club.

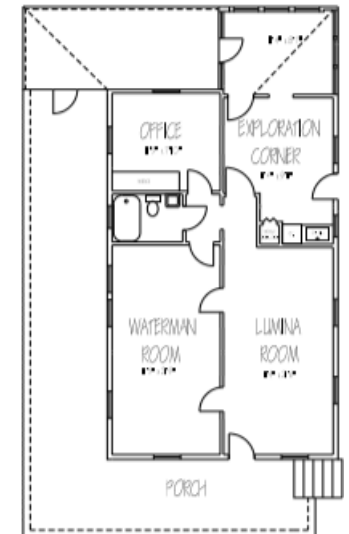


SECOND LEVEL

THE WATERMAN ROOM will explore the rich history of those who work and play on and in our local waters. It will feature movable exhibit panels to facilitate its use for holding talks, movies and demos.

THE LUMINA ROOM will have our outstanding Lumina exhibit and a new Barrier Island exhibit. Here we will have rotating exhibits that link our past to our present.

CHRIS STONE EXPLORATION ROOM for more hands-on activities for all adult and children's programming including Camp Chris Stone.



Wrightsville Beach Museum of History – PO Box 584

Wrightsville Beach, NC 28480 – 910-256-2569 – wbmuseum@bizccr.com – www.wbmuseumofhistory.com